



## A Guide to Nest Searching in Yacambú, Venezuela

# Chestnut-capped Brush-Finch (*Arremon brunneinucha*\*) - CCBF



## Parental cues:

Male calls as the female builds and the male accompanies her

Collects material within 1-2 meters of the nest

Pair remains in one area (if they are foraging they will usually keep moving through the forest) \*do not approach the nest or begin searching for it until they leave the area\*

During nestling period, the adults may give many high-pitched alarm calls when you are in the vicinity of the nest

Only females incubate, but males and females will feed nestlings

## Internet Media Links:

[Song](#) [Video](#)

## Nests:

Found in areas with abundant low shrubs

Open cup nest made up of sticks and plant fibers

1 white egg (2 eggs rare)

New nests can be found extremely close to old nests

Nests are fragile and often fall due to poor construction.

\*Formerly *Buarremon brunneinucha*

# Andean Solitaire (*Myadestes ralloides*) - ANSO



## Parental cues:

For both building and incubation: males can alert you to their territory through their song

Females will tip you off to the presence of a nest with their “seet” call that is usually made while they are hiding in the canopy. If you hear this sound, be quiet and don’t move. After a while the female will probably show herself and may go to the nest.

During the nestling period, both males and females will feed the young.

## Internet Media Links:

[Song](#)   [Video](#)

## Nests:

Open cup nests of moss in niches of large mossy trees, stilt palms, or cliffs near water

Note from the picture on the left, the small brown “fern scales” (from the fern’s uncurling croziers) used to line the inside of the cup

2 red-spotted eggs

# Slaty-backed Nightingale Thrush (*Catharus fuscater*) -SBNT



## Parental cues:

Males tend to sing a lot around the nest

If you see a female around the nest she will undoubtedly act really nervous. DO NOT MOVE! Nests can be found by simply watching where the birds go. Initially they will not want to go to the nest, but after 10 minutes or so they will go to it and may then quickly leave.

Only females incubate, but both males and females feed nestlings

## Internet Media Links:

[Song](#)



## Nests:

Open cup nests of moss in small trees at eye-level; lined with dry skeletons of leaves that look like dry grass or plant fibers

Often they will build their nests in rather open areas and the nests can easily be seen

2 bluish spotted eggs

Pay attention to new clumps of moss in a small tree that were not present a few days prior as these are likely to be new nests.

# Other thrushes:

Yellow-legged Thrush (*Turdus flavipes*\*) - YLTH, Black-hooded Thrush (*Turdus olivater*) - BHTH and Glossy-backed Thrush (*Turdus serranus*) - GBTH



Male Yellow-legged Thrush -YLTH



## Parental cues:

These are very nervous birds that get very agitated when you are close to its nest, stay still and hidden! If you are walking on a trail that has banks on the sides, there is a very high probability that you will flush the incubating female off the nest.

## Nests:

These species nests on lower elevation plots (below ~1600 m)  
Nest along the sides of banks, roads, tree forks, shrubs and also on tree sides between broken pieces of bark.  
Nest has an outer mossy rim with a cup lined with dark plant fibers. It blends perfectly to its background making difficult to spot the nest unless you have it in front of you

2-3 bluish spotted eggs

\*Formely *Platycichla flavipes*

# Slaty Antwren (*Myrmotherula schisticolor*) - SLAN



## Parental cues:

During building males and females hang close together.

Males and females incubate and you can find the nest during this switch (ie male disappears... female appears, just like magic).

They make a whiny sound frequently when you are close to a nest and they are agitated by your presence.

Both parents feed during the nestling period.



## Internet Media Links:

[Song](#)  
[Video](#)

## Nests:

Cup nests that are slung between two small twigs of a tree or shrub. The cups are really thin and are made of small black, fibers.

New nests can be found close to old nests (reuse material from old nests)

2 cinnamon marked white eggs

# Plain Antvireo (*Dysithamnus mentalis*) - PLAN



PLAN female



PLAN male

## Parental cues:

Similar to those of SLAN

They make a whiny sound frequently when you are close to a nest and they are agitated by your presence.

Both parents feed during the nestling period.

## Internet Media

### Links:

[Song](#) [Video](#)

## Nests:

Cup nest is slung in the lateral fork of small twigs of a tree or shrub

Cups are thin and are made of small black fibers with some fresh moss on the outside. These are slightly bigger than SLAN nests.

New nests can be found close to old nests (reuse material from old nests)

2 cinnamon marked white eggs

# Rusty-breasted Antpitta (*Grallaricula ferrugineipectus*) - RBAN



*Nest in building stage*



## Parental cues:

When a mate switch is about to occur, the male will begin to sing VERY SOFTLY in close proximity to the nest (5m) two or three times.

Both adults incubate and feed the young.

**Internet Media  
Links:**  
[Song](#)

## Nests:

A simple flat pile of sticks with a black cup in the center made of rootlets

2 spotted pale greenish or grayish eggs

Nest may fall due to poor construction – handle with care!

# Grey-throated Leaf Tosser (*Sclerurus albigularis*) - GTLE



## Parental cues:

These birds are very secretive.

You will find this nest by systematically searching all banks for an elliptical hole.

Both male and female incubate and take care of young.



## Nest:

A burrow 12 - 18" deep in a vertical bank, often above a trail.

2 white eggs kept on bed of dry leaves or sticks in back of burrow

***Insufficient information on this species.***

# Spotted Barbtail (*Premnoplex brunnescens*) - SPBA



## Parental cues:

The adults make loud calls when you are near the nests.

Males and females incubate and feed nestlings.

Very long pre-lay period

Shortly before lay, the cup wall is higher.

**Internet  
Media Links:**  
[Song](#)

## Nests:

Large structure made of moss and plant fibers with downward facing entrance

Often in a dark and humid section of a stream, near a waterfall, attached to an underside of a fallen log or a rock

New nest may be next to old nest or be a refreshed old nest

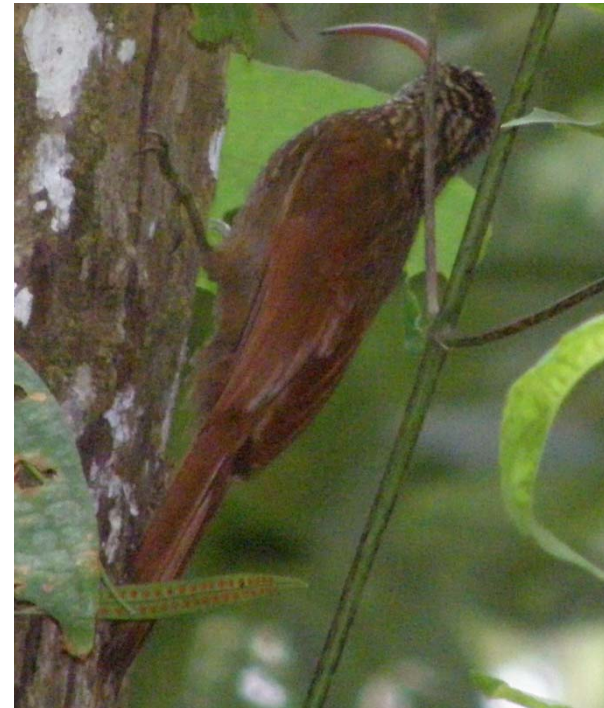
# Woodcreepers



**Plain-brown Woodcreeper**  
(*Dendrocincla fuliginosa*) - PBWO



**Montane Woodcreeper**  
(*Lepidocolaptes lacrymiger*) - MOWO



**Red-billed Scythebill**  
(*Campylorhamphus trochilirostris*)

## Parental Cues:

Woodcreepers don't excavate their own cavities to nest in, therefore is good to regularly check existing cavities.

This species will prospect many cavities before deciding to pick one

## Nests:

Cavity nest

2-3 white eggs

***Insufficient information on these species.***

# Gray-breasted Wood-Wren (*Henicorhina leucophrys*) - GBWW



## Parental cues:

Parents will duet which will accelerate and change to the alarm call as you near their nest

Only the female incubates and both will feed nestlings

## Internet Media Links:

[Video](#)  
[Duet](#)  
[Alarm Call](#)

## Nests:

Found around tree falls, roads, and streams

Nests are often located in small trees or suspended amidst thick tangles of vines

Oval in shape with a downward-facing entrance, made of plant fibers intertwined with fresh green moss. Some parents use some feathers as lining

New nests can be found close to old nests (some nests are used as dormitories)

2 white eggs

# Whiskered Wren (*Thryothorus mystacalis* )- MSWR



MSWR nestling



MSWR adult

## Parental cues:

Parents will duet which will accelerate and change to the alarm call as you near their nest

Only the female incubates and both will feed nestlings



## Internet Media

Links:

[Video](#)

## Nests:

This species nests on lower elevation plots (below ~1600 m)

Domed shape nest in LOW dense vegetation

Nest made of dry grasses

2 spotted white eggs

Inc Period: 19days???

Nstl Period: 15 days???

***Insufficient information on this species.***

# Three-striped Warbler (*Basileuterus tristriatus*) -TSWA



## Parental cues:

- During building: males will sing a really quiet song near the nest and females respond with a chatter that gets gradually quieter as she gets closer to the nest.
- Be extremely careful about moving and giving away your position will abandon easily during the laying period \* wait until they leave on their own to check the nest or if the material they are bringing is large wait until your next visit to the nest \*
- During the incubation: female suddenly joins a male that was alone and then the pair takes off, do not bother following the pair, but rather wait near where you saw them join, they should return before 45 minutes
- During the nestling stage: the adults make a lot of noise while feeding the nestlings, and you should be able to find them in much the same way as when they were building.

Only the female incubates, but both feed nestlings

## Nests:

On the ground, on the banks of small slopes formed from road cuts, small creeks, or in the hole left by the roots of a fallen tree

Globular with a front entrance; made of fine roots and twigs; outer layer of leaves covering the bottom and sides

2 spotted eggs



Internet  
Media  
Links:  
[Video](#)

# Slate-throated Redstart (*Myioborus miniatus*)- STRE



## Parental cues:

The male might accompany the female while she is building; he will be silent.

Male may spend a lot of time singing while female is incubating.

## Nests:

On the ground, on steep slopes; often on slopes formed from road cuts or trails

Domed cup made of leaves and grass

2-3 eggs

This species nests on lower elevation plots (below ~1600 m)

Internet  
Media  
Links:  
[Video](#)

# Swifts

All species nest near waterfalls or even behind them. Also underneath rocks, but always very close to moving water.

New or reconstructed nests can be found near old ones.



Nestlings of Chestnut-collared Swift  
(*Streptoprocne rutila*)

- 2 eggs
- Green (mossy) rim sometimes distinct from the darker bottom of the nest.



A nestling of White-collared Swift  
(*Streptoprocne zonaris*)

- 2 eggs
- Not common, generally near somewhat big waterfalls.



Spot-fronted Swift nest  
(*Cypseloides cherriei*)

- 1 egg

***Insufficient information on these species.***

# Violet-Chested Hummingbird (*Sternoclyta cyanopectus*) - VCHU



VCHU nestlings



VCHU female incubating

## Parental Cues:

Most nests are found by systematic search.

Female will often “buzz” (diving past you repeatedly) you if you are approaching her nest, whether she is building, incubating or feeding nestlings. If you back off a bit, you might see her fly in to the nest. Watch carefully though, as they are very fast. If the female buzzes in and then suddenly disappears behind leaves right in front of you, quite often it is because she has gotten on the nest. Hummingbirds choose a variety of nest sites in the forest or along the stream. Only females incubate and rear the young.

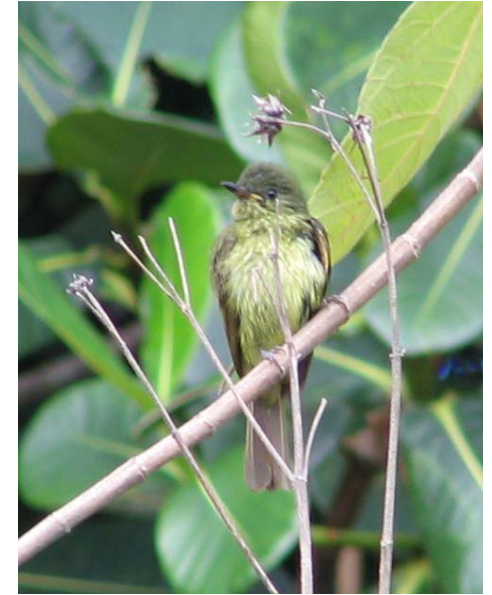
## Nest:

1- 4 meters above ground

Small light brown open cup nests that have some green mosses, lichens, fern scales and spider webs

2 white eggs

# Olive-striped Flycatcher (*Mionectes olivaceus*) - OLFL



## Parental cues:

Males lek, females take care of all parental duties (nest building, incubation and feeding of young).

This species is extremely secretive and you may almost never see the adults anywhere but the nest.

For the most part you will find their nests opportunistically by knowing what the nest looks like

**Internet Media  
Links:**  
[Song](#)

## Nests:

Often found in wet areas, such as streams and swamps . Also it is often located in a thick patch of medium sized trees or in the cut bank near a stream.

The nest is a hanging pendulum of mosses attached to the end of a small, dangling liana

2-3 white eggs

# Cinnamon Flycatcher (*Pyrrhomyias cinnamomeus*) - CIFL



## Parental Cues:

During building males and females hang close together.

Female and male fly out (sally) together pretending to catch an insect, while the female stops at the selected spot to build the nest

Only female incubates

## Nests:

In a nook or cranny of a building, tree or rocky slope

Made with green moss and dry plant fibers

2 spotted eggs

***Insufficient information on this species.***

# Golden-faced Tyrannulet (*Zimmerius chrysops*)- GFTY



## Parental cues:

Following a bird with material will surely lead you to the nest. Nests are also often found by systematic search.

We suspect only the female builds the nest

***Insufficient information on this species.***

## Nests:

This species nests on lower elevation plots (below ~1600 m)

Globular green moss nest build into already mossy clump on a tree

1-6 meters off the ground

2 slightly spotted eggs



# Golden-winged Manakin (*Masius chrysopterus*) -GWMA



*Female incubating*

## Parental cues:

Males lek, females take care of all parental duties (nest building, incubation and feeding of young).

Females act nervously near the nest, flying from one branch to another. Step back and look for a mossy tree which they tend to prefer to conceal their nest.

## Internet Media Links:

[Video-female](#)

[Video-male](#)

## Nests:

Nest similar to PLAN nest. Slung on a forked branch, lined with rootlets and fresh moss underneath the cup. Generally, below 2.5m high.

2 spotted eggs (with a heavily spotted ring near the thick end)

This species nests on middle and high elevation plots (above ~1500 m)

***Insufficient information on this species.***

# White-crowned Manakin (*Dixiphia pipra*) - WCMA



Female WCMA incubating

## Parental cues:

Males lek, females take care of all parental duties (nest building, incubation and feeding of young).

This species nests on lower elevation plots (below ~1600 m).



Male WCMA- looking good, but not helping the female at all

## Nests:

Nests on a forked branch

Lined with dark fibers

Attached dry dark leaves underneath the cup (with spider webs)

2 eggs

***Insufficient information on this species.***

# Red-headed Barbet (*Eubucco bourcierii*) -RHBA



Male RHBA



Female RHBA

## Parental Cues:

Check all suspicious cavities regularly.

Both parents excavate the cavity in a soft rotten stump

Both parents incubate and feed young

## Nests:

Found only on lower plots!

3 eggs

***Insufficient information on this species.***

# White-throated Spadebill (*Platyrinchus mystaceus*)



## ***Nest:***

- Found only on lower plots!
- 2 white eggs
- small open cup, lined with dark fibers or rootlets and dry plant fibers outside

***Insufficient information on this species.***



## **THE END**

More nest descriptions in the future....

NOW, GO FIND ME SOME NESTS and take pictures!